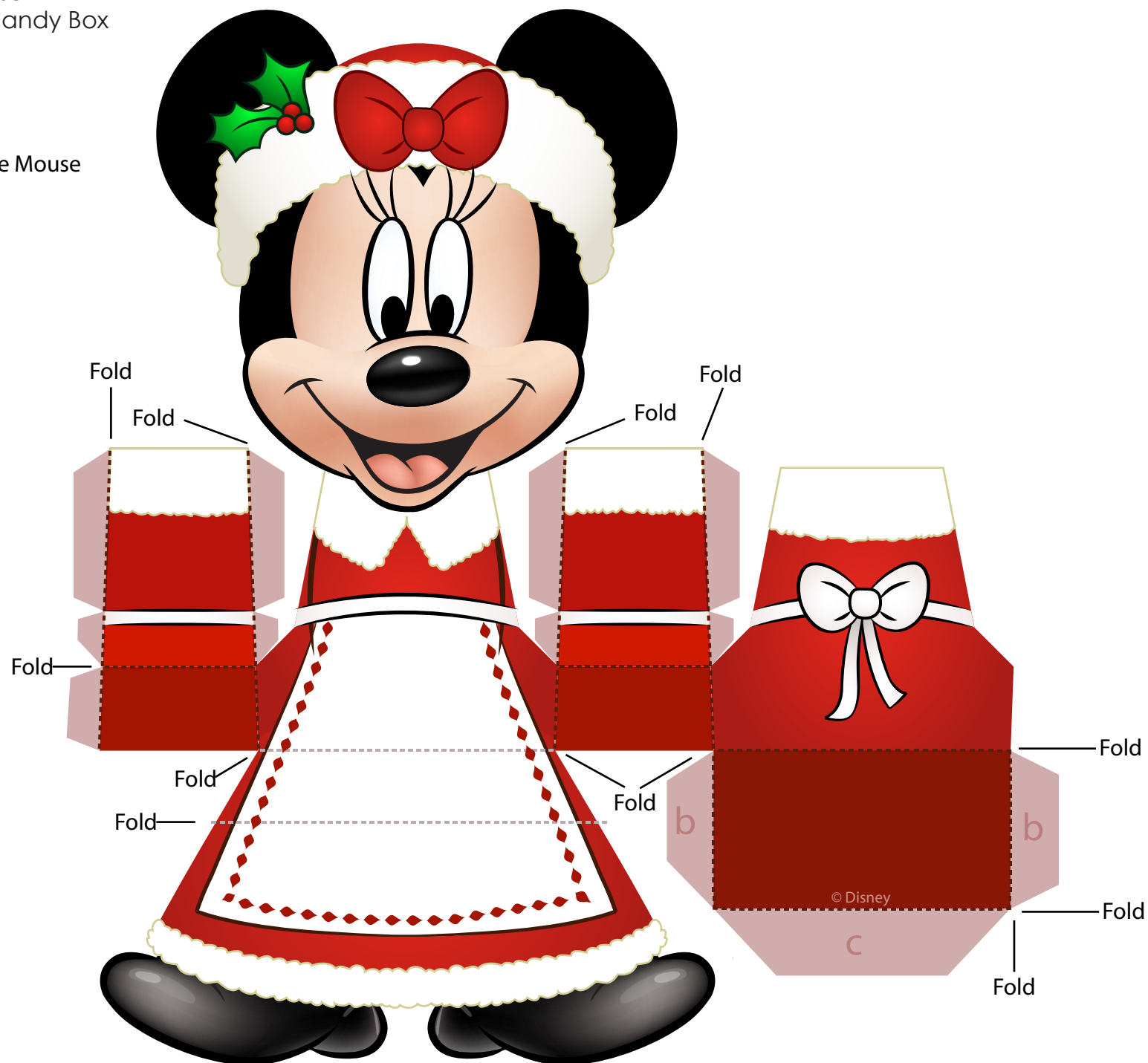
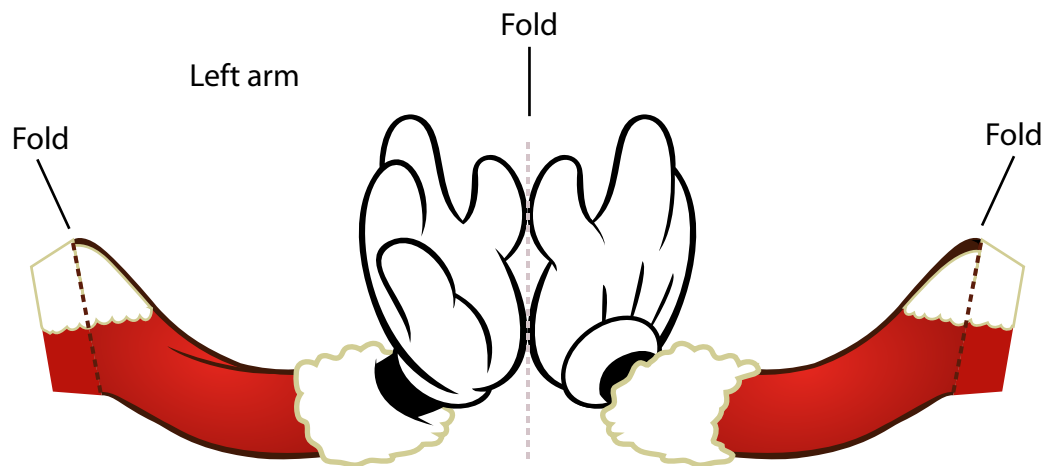
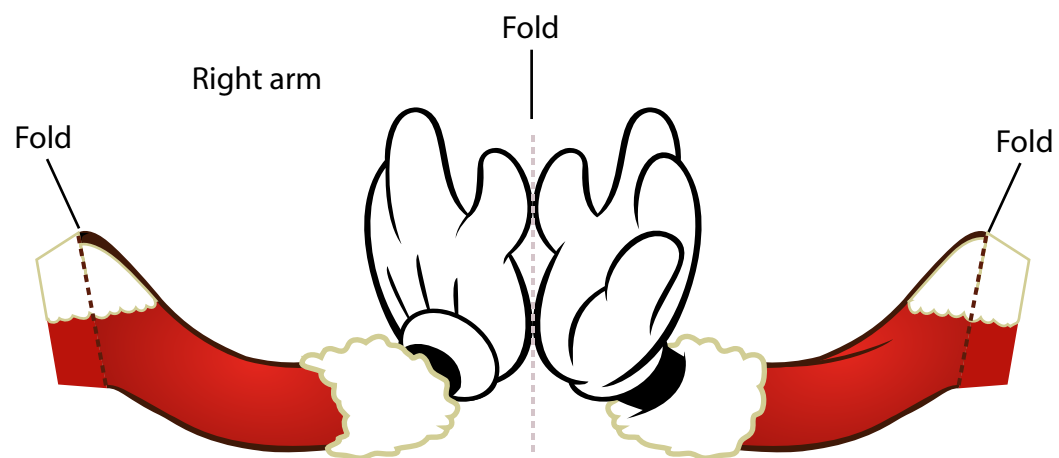


Minnie Mouse
Christmas Candy Box

Minnie Mouse



Minnie Mouse
Christmas Candy Box



Minnie Mouse Christmas Candy Box: Instructions

Instructions:

1. Print the template on regular paper or cardstock and cut out the pieces. Make all folds along dashed lines.
2. Using either glue or double-sided tape, close Minnie's body by securing the tabs around her torso to their corresponding pieces.
3. Close the bottom of the candy box by securing the B tabs, followed by the C tab.
4. Fold each of Minnie's arms in half along the dashed line so the design is two-sided. Without sticking the tabs together, secure the two sides.
5. Butterfly the tabs on Minnie's arms, and secure them to the sides of her body.
6. Finally, fold the top dashed lines across Minnie's skirt toward you, and fold the lower dashed lines away from you – this will help her sit in place.