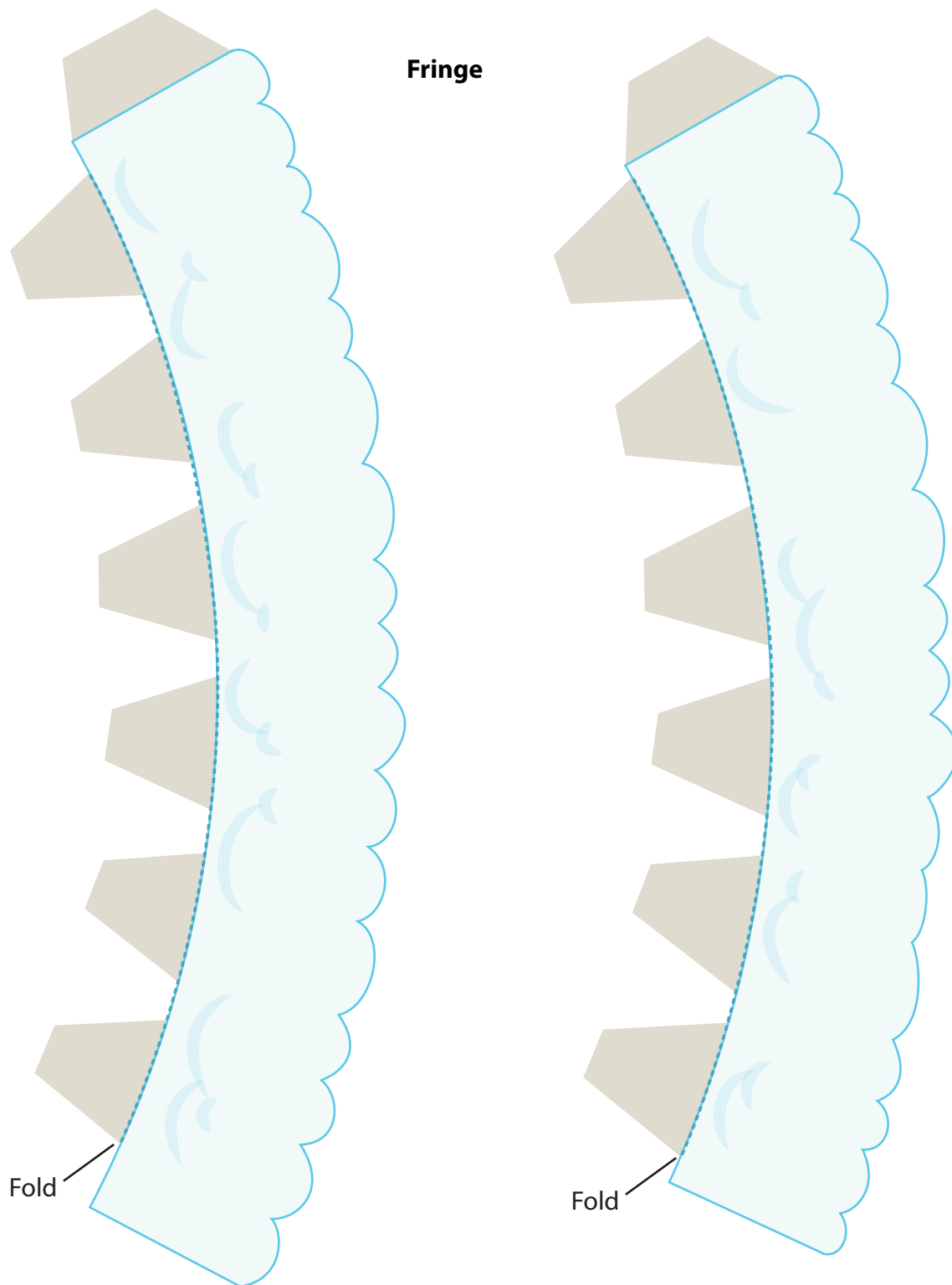


Mickey Mouse Santa Hat

**Hat**

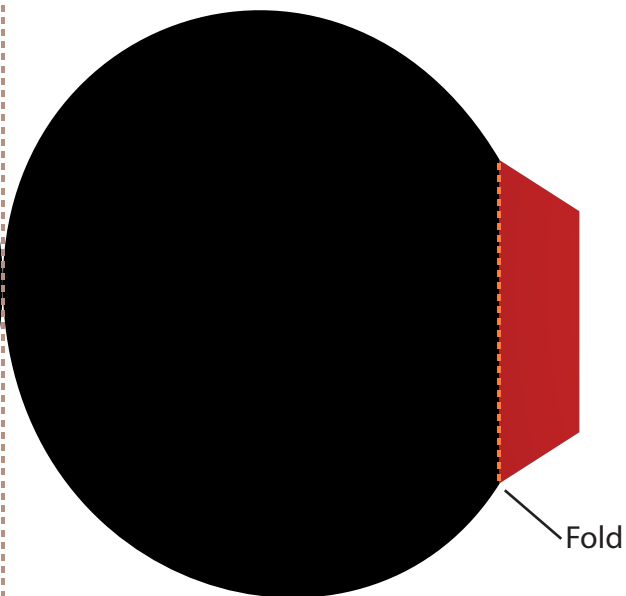
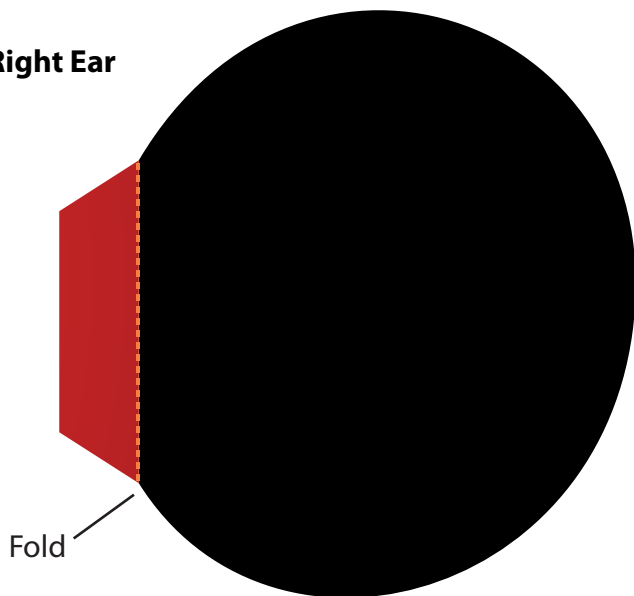


# Mickey Mouse Santa Hat

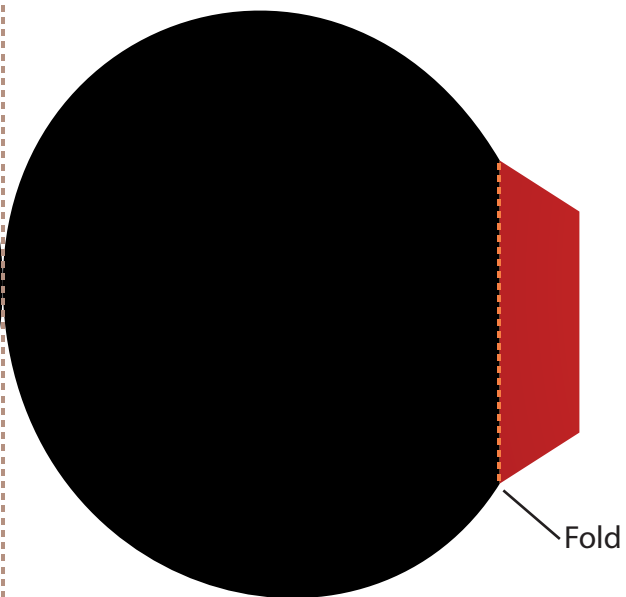
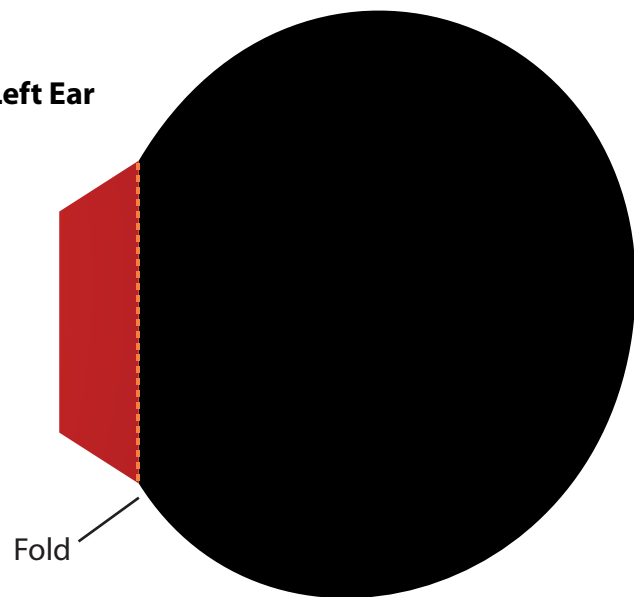


# Mickey Mouse Santa Hat

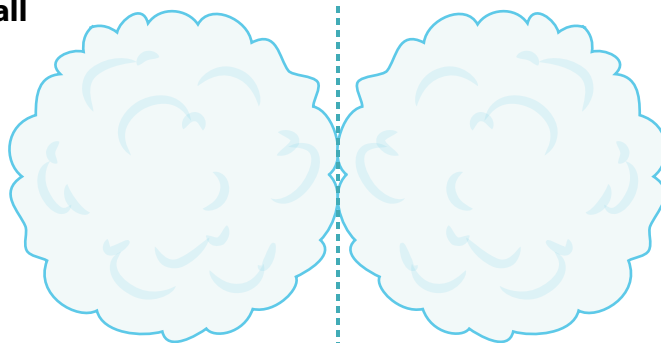
**Right Ear**



**Left Ear**



**Cotton Ball**



Fold

# Mickey Mouse Santa Hat

Instructions:

1. Print the template on regular paper or cardstock and cut out the pieces.
2. Roll the hat into a cone, then secure the shape with the large tab using glue or double-sided tape.
3. Secure the two pieces of fringe together with the end tabs and fold the remaining tabs along the dashed lines away from you.
4. Place the base of the hat between the inside of the fringe and the tabs, then secure the tabs to the inside of the hat.
5. Fold each ear in half and secure so the design is two-sided. Butterfly the tabs outward and use them to attach the ears to the sides of the hat.
6. Fold the cotton ball in half so the design is two-sided. Place it on the tip of the hat and secure with glue or double-sided tape.

