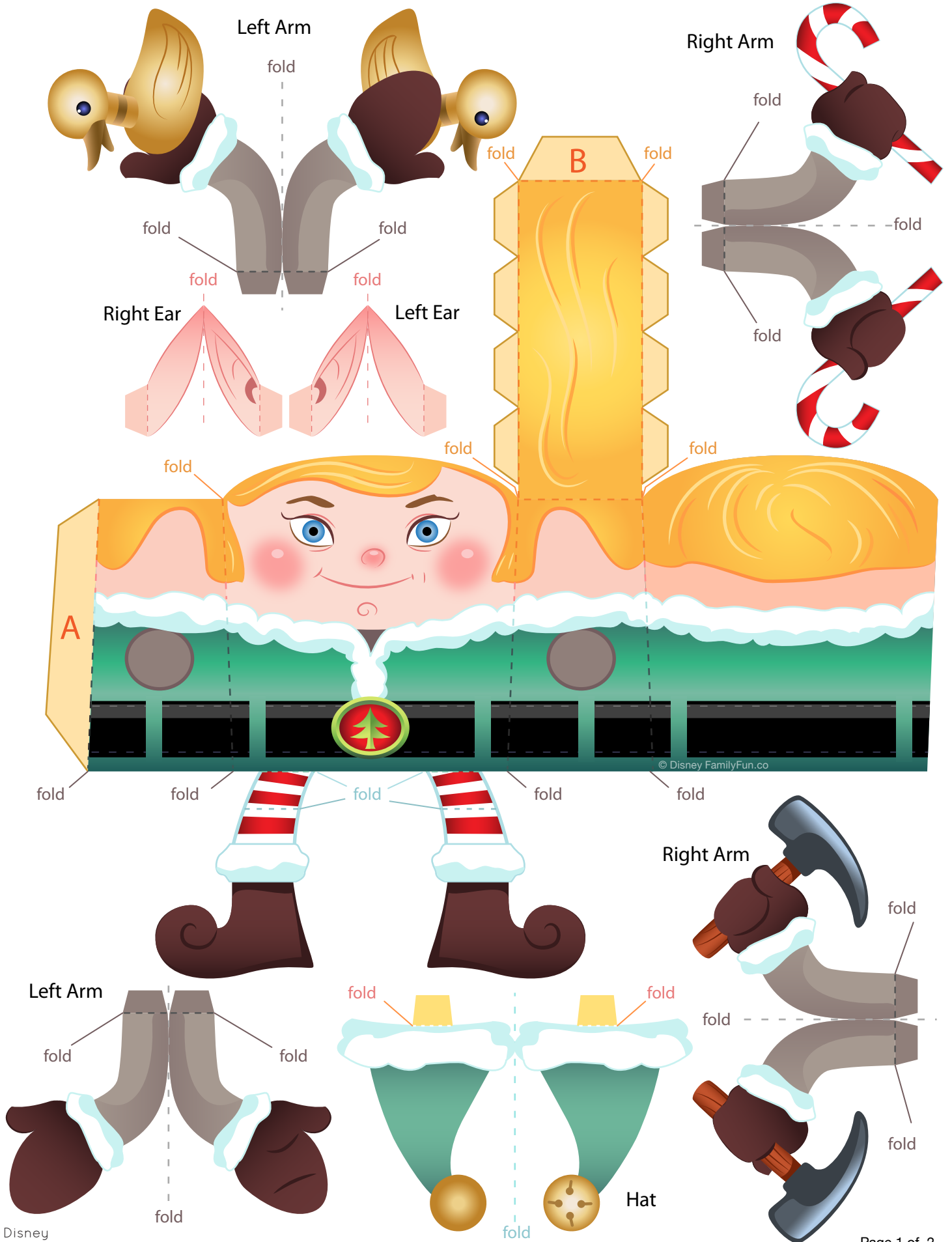


Elf 3D Character



© Disney FamilyFun.co

1. Cut out the Elf and its pieces. On the main character piece, make folds (away from you) along the dotted lines, including the tabs. Fold the legs toward you and the knees away from you. Glue tab A to the back side of the Elf's back. The character should be taking shape.

2. Put glue on the eight small tabs (four per side) that are located on each side of the top of the Elf's head. Then glue them to the back side of the Elf's head. Make sure you hold each tab in place for a few seconds before you move on. Next, glue tab B to the back of the side of the Elf's head.

3. Cut out the arms. Keep each connected in the middle and fold in half. Bend the tabs toward you, and then glue the back sides of the arm (leaving glue off the tabs) together. Be sure to not glue the tabs to each other. Once the arms are dry, put glue on the blank side of the open tabs and glue the arms to each side of the Elf. Use the same technique to cut out, fold, and glue the ears.

Your Elf character is now complete! Place him on the edge of a shelf or table, or give him as a gift.