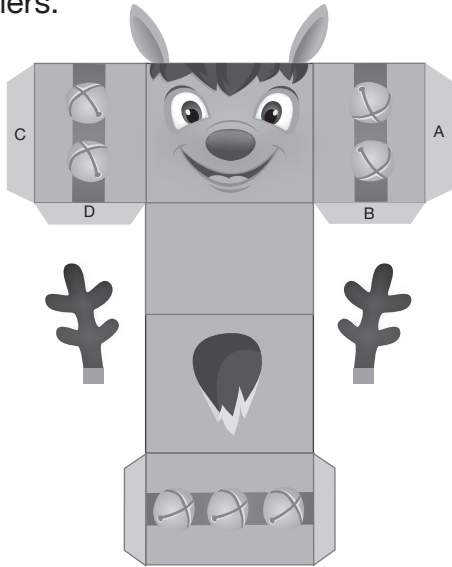
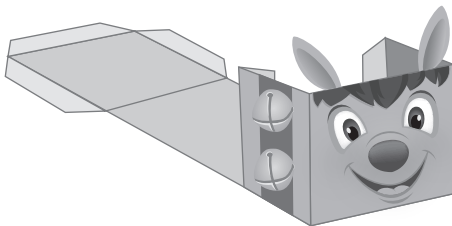


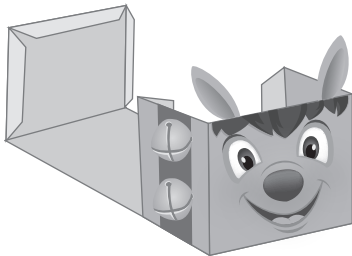
1. Print out the Reindeer Gift Box. Use card stock for a more sturdy box. Cut out the gift box and both antlers.



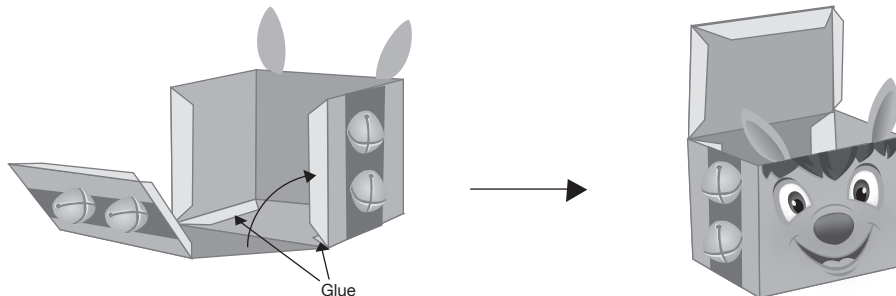
2. Fold along the line directly below the reindeer's face. Fold away from you, as shown. Next, fold in the two sides that have the matching bells. Fold tabs A & B away from you.



3. Fold tabs C, D and E inward. Then, fold the last section (with the bells) up, as shown.



4. Fold the last section inward and your box should now be taking shape. Glue the B tabs to the blank side of the bottom square. Then glue the A tabs to the blank side of the "tail" section.



5. Next, place glue on the tabs at the bottom of the antlers. Glue the antlers to the back of the reindeer face section. Glue the antlers so they are between the two ears. Now that your Reindeer Gift Box is complete, fill it with a special treat or gift and close the lid by sliding the tabs inside the top of the box.

